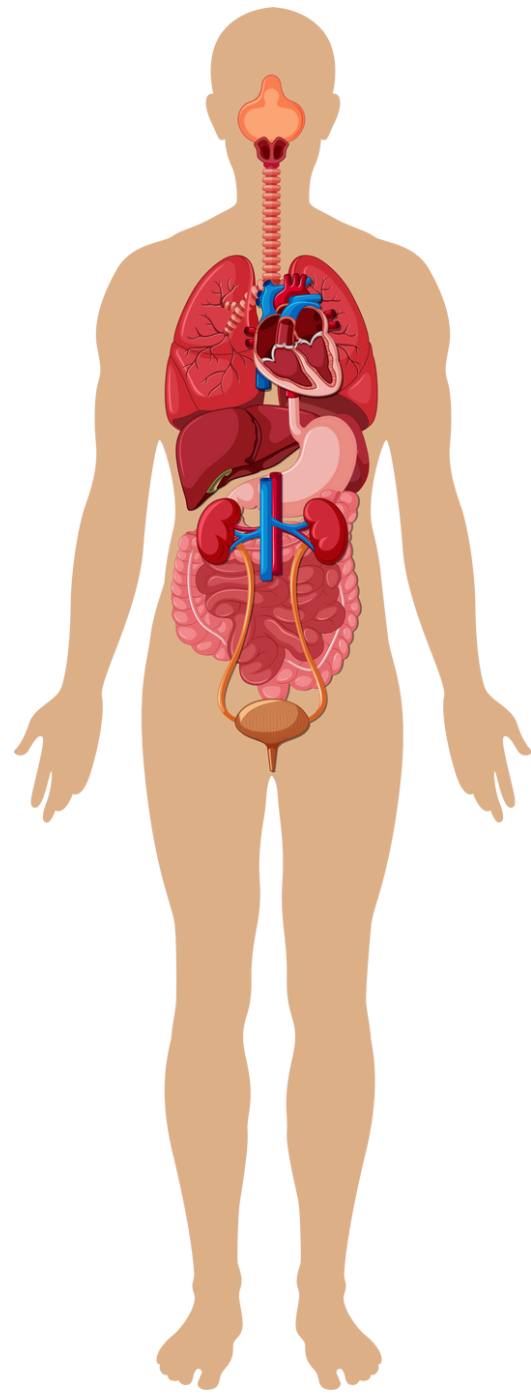


THE HUMAN BODY

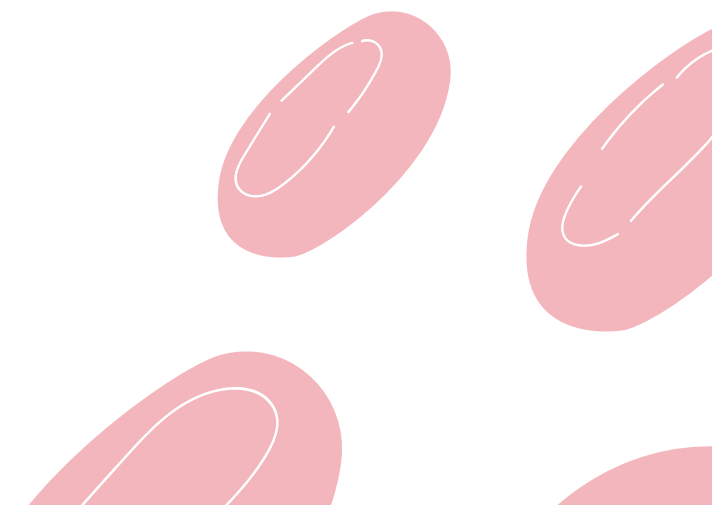


Anatomy

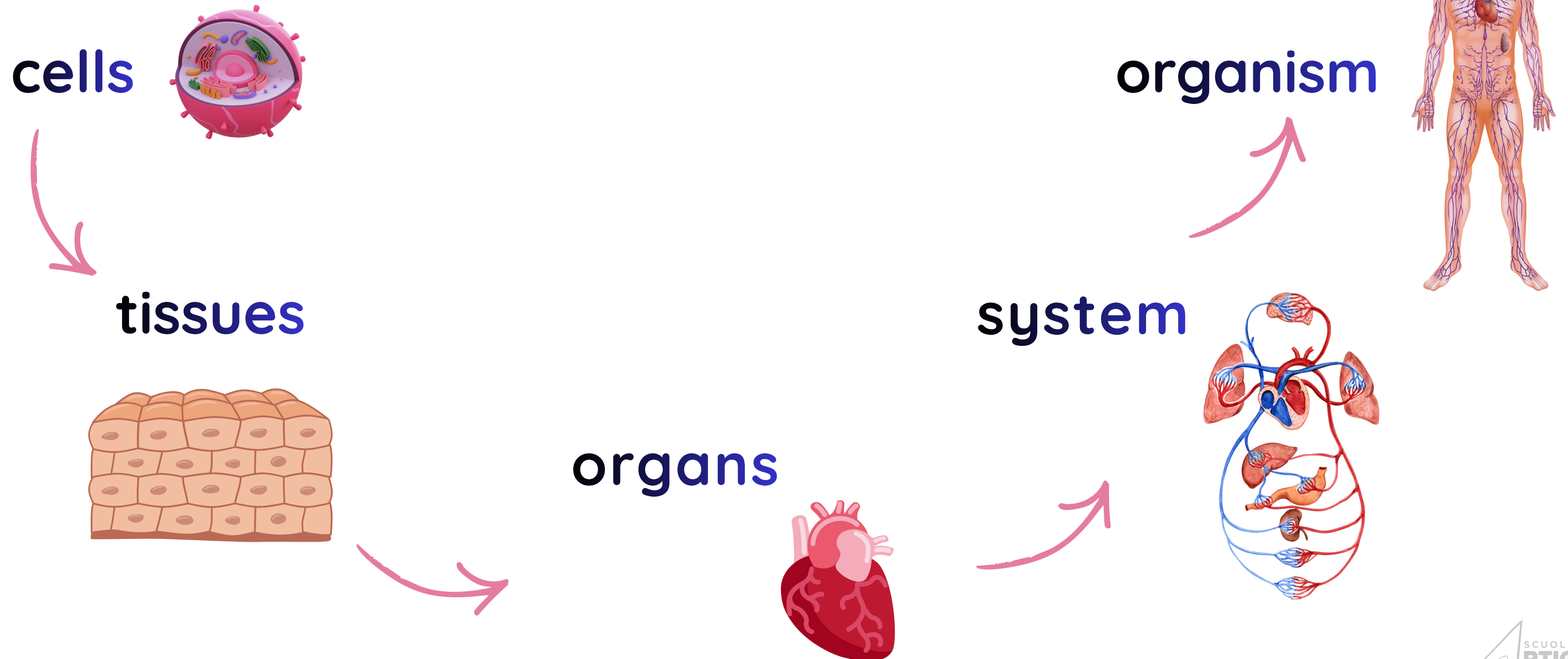
The science that studies the human
STRUCTURE.

Fisiology

The science that studies the **FUNCTIONS** of
each part of the body.



The body comprises five levels of hierarchical organisation.



Tissues

Cells that perform the same function

epithelial
tissue/
tessuto
epiteliale

muscle
tissue

connective
tissue

nervous
tissue
